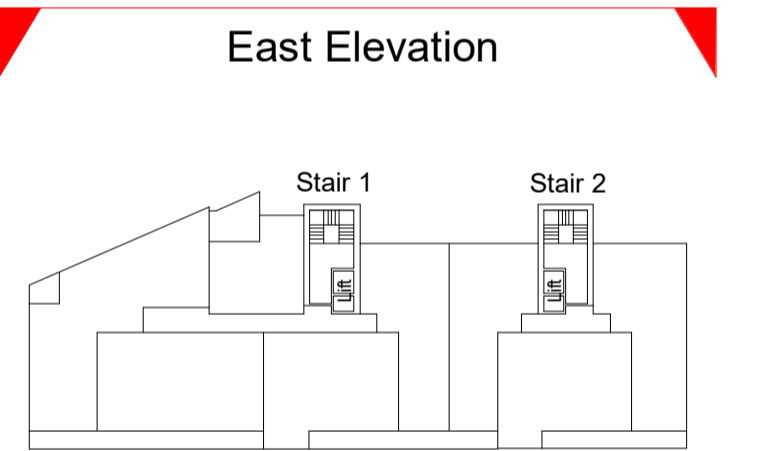


# DESIGN INTENT DRAWING

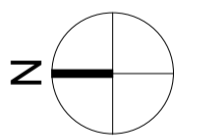


### Material Legend

- 1 Oatmeal Brickwork
- 2 Glazed balustrade with power-coated metal handrails
- 3 Grey Brickwork
- 4 Powder Coated Aluminium Double Glazed Curtain Wall
- 5 Zinc Standing Seam Cladding
- 6 Powder Coated Pressed Metal Coping Detail
- 7 Powder Coated Pressed Metal
- 8 Powder Coated Aluminium Double Glazed Windows
- 9 Render Finishing Off White
- 10 Selected Limestone
- 11 Obscure Back-Painted Glazing
- 12 Charcoal Brickwork



### Key Plan (NTS)



Rev	Date	Description	Issued By

Project Stage

## PLANNING

Client:

Eastwise Construction Swords Limited

Project:

Hartfield Place  
Swords Road, Whitehall, Dublin 9  
D09 C7F8

Drawing Title:

BLOCK D - East Elevation GA - 472 Units

Drawn	Checked	Paper Size	Scale	Date
DP	CM	A1	1 : 100@A1	Mar. 2022

Project No.	Drawing No.	Classification	Revision
HARTPL	042522		

File Name  
HARTPL-CWO-BD-ZZ-DR-A-042522

Status:  
**S2-Suitable For Information**



No.1 Sarsfield Quay, Dublin 7, D07 R9FH  
t: 01 518 0170 e: admin@cwoarchitects.ie  
Dublin | Cork | Galway | London | UK & Europe +  
www.cwoarchitects.ie

Please consider the environment before printing this sheet

1 GA - East Elevation  
1 : 100